

## Residential and French PVCu Doors

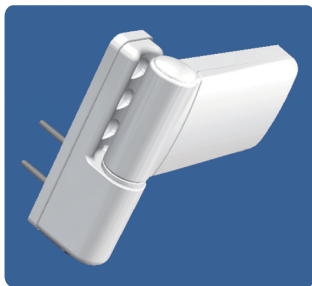
### Outstanding Security

#### Tried and Tested

Our 8-point high security lock is fitted to all of our residential and french doors as standard. The 25mm hooks give maximum engagement into the steel reinforced door frame and keeps.

The lock provides excellent security and outstanding weatherability. It is easy to use and ensures a long and trouble free life.

Our French (double) Doors have an additional 4 shoot bolt locking points to the slave and master doors.



Our door flag hinges have also been chosen for their security, style and longevity. We fit three per door sash.

Available in a range of colour options the hinges compliment the intrinsic security and design features of our residential and french doors.

#### Key Hinge Features

Very Slim and elegant design  
Simple to Adjust for a professional installation  
Superior fixings into steel reinforcing: to support the doors weight  
Available in White, Brown, Caramel, Black, Gold & Chrome  
Pass 24 Secured by Design compliant  
Tested Secure for Open In & Open Out

#### Thresholds

There are 5 threshold options including Low Part-M compliant. PVCu options include 56mm, 70mm and 84mm step heights. Aluminium options include a 44mm heavy duty threshold and the 15mm Part-M aluminium threshold.

#### Secured by Design

Our standard Elitis door locks have surpassed the Secured by Design testing regime. Elitis also offers the Gallery and Finesse range of composite doors which are available with a manufacturing PAS 23/24 Secured by Design Licence. Please ask for details.

#### Key Lock Features

- Two brass eccentric roller cams for easy compressional adjustment and smooth operation
- Three 25mm engagement hooks for ultimate security
- Two deep throw linear bolts tapered for easy engagement
- Dual spindle option for lever/lever or lever/pad handle operation
- Fully reversible centre latch with dead locking
- Integral latch snib
- Deep engagement centre hook
- Stainless steel centre plate

#### Handles

Door handles come in a range of colours. Gold is fitted as standard. Other colours include White, Black & Chrome.

#### Lock Cylinder

Our standard lock cylinder is a Yale 6 pin drill resistant tested to the British Standard BS EN1303:2005 with 3 keys providing a standard level of security.



#### ABS Cylinder Upgrade

We also offer an upgrade to the ABS High Security Cylinder which is Anti-Snap, Anti-Bump, Anti-Drill and Anti-Pick.



Please ask for our cylinder information sheet.

